

**NEW  
PRODUCT**



14  
glassnox A3 vertical

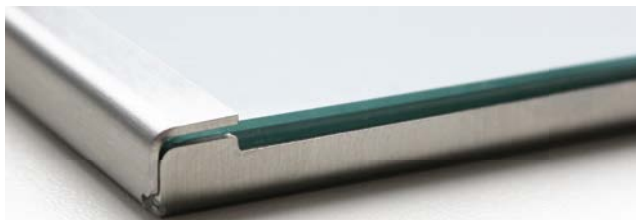
print not included

## information

- cornice in acciaio inox spazzolato con sistema ad incastro a molla, pannello d'alluminio verniciato color bianco, spessore cornice 8mm  
*rahmen aus gebürstetem edelstahl mit spannfeder, aluminiumpaneel weiss lackiert, rahmenstärke 8mm*  
**brushed stainless steel frame with spring-loaded system, white coated aluminium panel, frame thickness 8mm**
- lastra in acrilico color blu cristallino o vetro temperato  
*frontscheibe aus kristallblauem acrylglas oder temperiertem glas*  
**front cover made of crystal blue acrylic or tempered glass**
- discreta distanza dal parete grazie al supporto  
fissaggio in materiale plastico  
*elegante schattenfuge durch montagepaneel aus kunststoff*  
**elegant shadow gap thanks to the synthetic mounting support**
- minuteria per il montaggio a parete incl.  
*montagematerial für die wandbefestigung incl.*  
**wallmounting material incl.**

# glassnox

MADE IN EU design by KD



**IT** glassnox è il porta informazioni ideale per un ambiente moderno! grazie al disegno intelligente l'informazione può essere cambiata in modo semplice e veloce. basta spingere la protezione in acrilico color blu cristallino o in vetro temperato in alto per aprire la cornice. la cornice extra piatta in acciaio inox spazzolato rende elegante qualsiasi presentazione. tutti i prodotti glassnox possono essere fissati su le superfici lisce con il biadesivo speciale. glassnox è ideale per la segnaletica interna per porte o piani o come porta informazioni.

**DE** glassnox ist die ideale beschilderung für modernes ambiente! dank des cleveren designs ist jede einzelblattinfo schnell und einfach zu wechseln. die abdeckungen aus kristallblauem acrylglas oder temperiertem glas werden zum öffnen einfach nach oben geschoben. der extra flache und schlanke rahmen aus gebürstetem edelstahl gibt jeder präsentation den richtigen rahmen. alle glassnox produkte können auch mit speziellem doppelkleber auf glatten oberflächen befestigt werden. glassnox ist ideal für die elegante tür- und etagenbeschilderung oder häufig wechselnde information.

**EN** glassnox is the perfect signage for the modern ambiente! thanks to its clever design every information can be exchanged quickly and easily. the covers made of crystal blue acrylic or tempered glass are simply pushed upwards to open the frame. the extra flat frame in brushed stainless steel gives your presentation a trendy look. all glassnox products can be also mounted with special adhesive tape to smooth surfaces. glassnox is perfect for the elegant signage as well as for the frequent exchangeable information.

## glassnox

		size*	
1	GLNR10574SY	105x74mm	A7 vertical, acrylic, 1pc
2	GLNR148105SY	148x105mm	A6 vertical, acrylic, 1pc
3	GLN148148SY	148x148mm	acrylic, 1pc
4	GLNR148210SY	148x210mm	A5 horizontal, acrylic, 1pc
5	GLNR148297SY	148x297mm	acrylic, 1pc
6	GLNR148594SY	148x594mm	acrylic, 1pc
7	GLNR210148SY	210x148mm	A5 vertical, acrylic, 1pc
8	GLN210210SY	210x210mm	acrylic, 1pc
9	GLNR210297SY	210x297mm	A4 horizontal, acrylic, 1pc
10	GLNR210420SY	210x420mm	acrylic, 1pc
11	GLNR297210SY	297x210mm	A4 vertical, acrylic, 1pc
12	GLN297297SY	297x297mm	acrylic, 1pc
13	GLNR297420SY	297x420mm	A3 horizontal, acrylic, 1pc
14	GLNR420297SY	420x297mm	A3 vertical, acrylic, 1pc
15	GLNR594420GL	594x420mm	A2 vertical, glass, 1pc
16	GLNR841594GL	841x594mm	A1 vertical, glass, 1pc
17	GLNR148800SY	148x800mm	acrylic, 1pc
19	GLNAD		double-sided tape, 10pc

\* altezza x larghezza | höhe x breite | height x width

15

glassnox A2 vertical



print not included



## advantages

- 

materiali durevoli e di alta qualità: acciaio inox, acrilico/vetro  
*langlebige und hochwertige Materialien: edelstahl, acryl/glas*  
**long living and durable materials: stainless steel, acrylic/glass**
- 

sempre moderno e nobile: inserisce perfettamente in qualsiasi ambiente  
*zeitlos und edel: passt in jedes ambiente*  
**timeless and classy: suitable for every ambience**
- 

sistema a molla integrato: cambio delle informazioni semplice e rapida  
*spannfeder-system: einfacher und schneller infoaustausch*  
**tension spring system: easy and quick information exchange**
- 

elegante distanza dal muro: look elegante e aspetto moderno  
*schattenfuge: elegante optik und hochwertiger look*  
**shadow gap: elegant look and trendy design**
- 

flessibile: configurare il layout e stampare direttamente su carta  
*flexibel: information selbst gestalten und einfach ausdrucken*  
**flexible: design the layout and simply print on paper**



- 18 wall support
- 19 double adhesive tape
- 20 frame in stainless steel
- 21 steel springs
- 22 rear panel in white coated aluminium
- 23 your information
- 24 cover in acrylic or glass

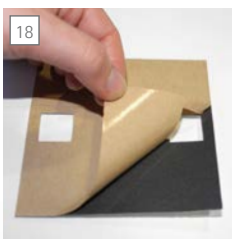


1  
glassnox A7 vertical

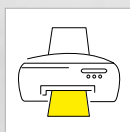
per il montaggio su superfici lisce in-  
dichiamo nostro biadesivo speciale

für die montage auf glatten  
oberflächen empfehlen wir unseren  
speziellen doppelkleber

for mounting to smooth surfaces  
we provide you with our special  
adhesive tape



18

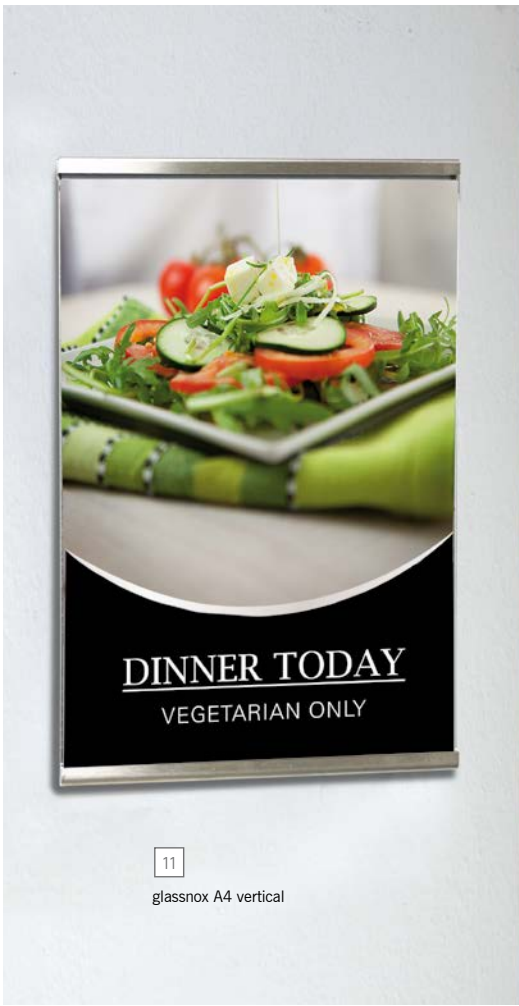


create e stampate il layout  
semplicemente con il pc

layout am eigenen pc gestal-  
ten und ausdrucken

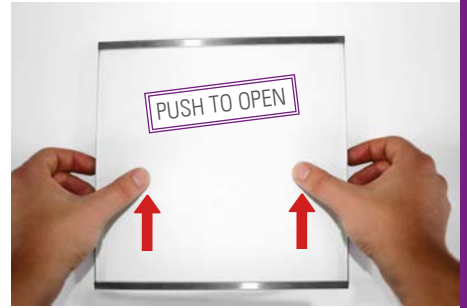
design and print with your  
own workstation





11

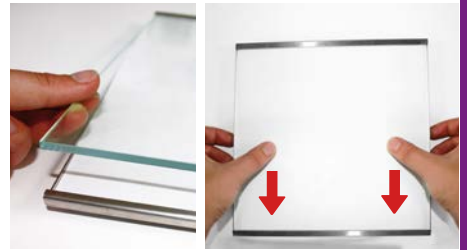
glassnox A4 vertical



spingere leggermente la protezione e farla scorrere verso l'altro per aprire la cornice

zum öffnen schiebe leicht andrücken, nach oben schieben und herausnehmen

push to open gently the cover, slide it upwards and then take it out



inserire l'informazione, spingere leggermente la lastra e farla scorrere verso il basso per chiudere la cornice

information einlegen, zum schließen schiebe leicht andrücken und nach unten schieben, bis sie wieder einrastet

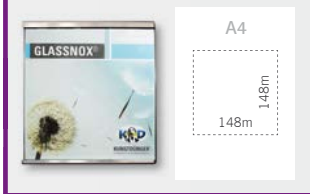
insert the paper, push the cover gently to close downwards until it locks again into place



3

glassnox 148x148mm

SIGNCODE PAPER pag. 317



**IT** pratico: inserto cartaceo prefustellato per la personalizzazione. carta in formato A4, inserto centrale prefustellato, 148x148mm.

**DE** praktisch: vorgestanzte papier einleger zum selber drucken: A4 format mit mittig vorgestanztem einleger 148x148mm.

**EN** convenient: pre-cut paper inlay for customizing with print: A4 format with center pre-cut inlay in size 148x148mm.



sign